

Airport Facts

- ◆ What is Whiteman Airport?

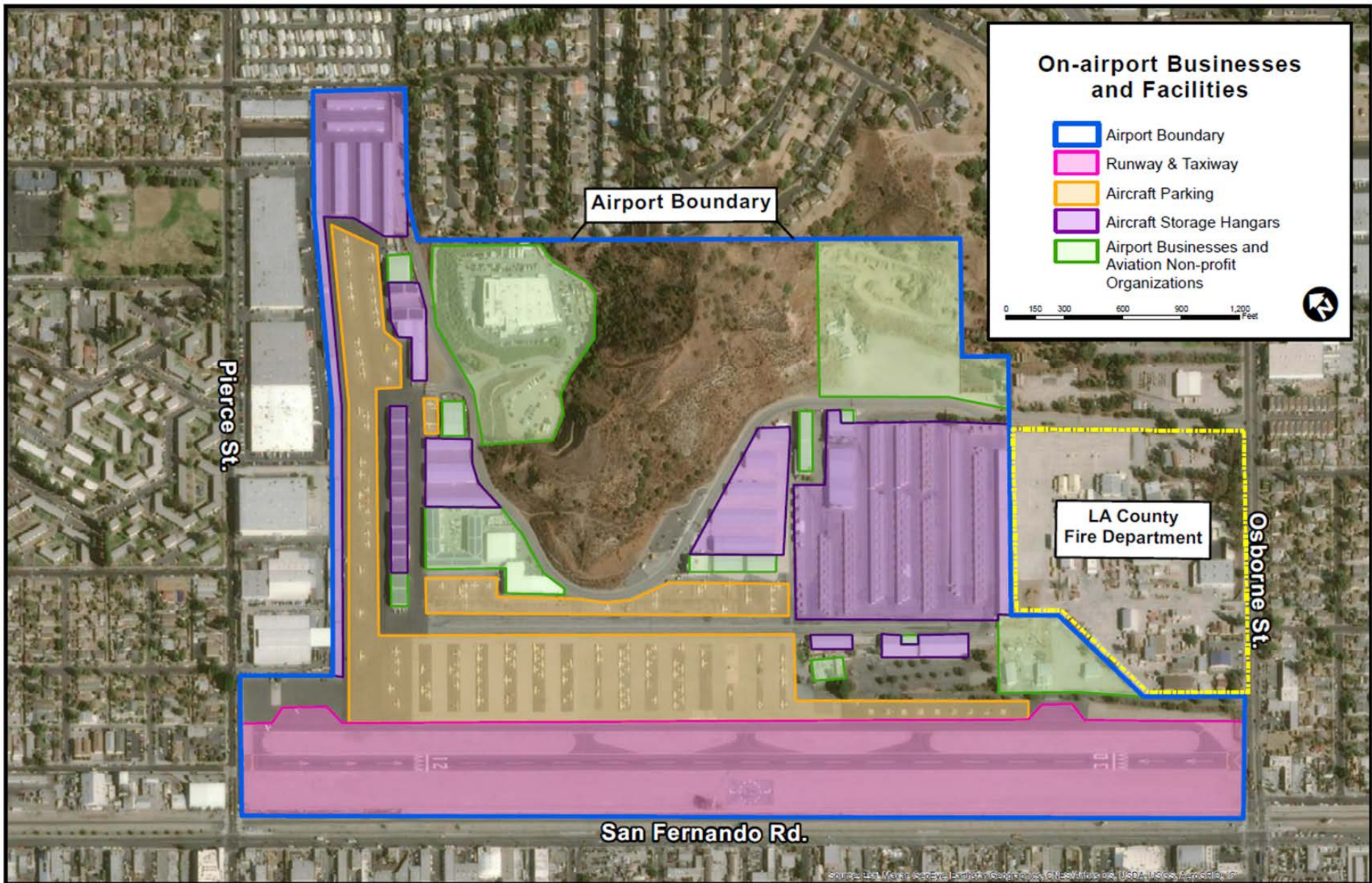
- General Aviation
 - Does not serve scheduled commercial aircraft
- Reliever Airport
 - Relieves traffic from other local and regional airports, allowing for efficient operations across the system.

- ◆ What happens at the Airport?

Fire Aircraft Charter Traffic Reporting
Medical Disaster Response
 Personal/business flights
Non-profits Search and Rescue Weather
Helicopter Law Enforcement
Flight training News

Airport Businesses and Organizations

Business	Primary Operation
Able Air Corporation	Aircraft maintenance
Argubright Construction	Steel building construction
Burbank Air Service	Aircraft maintenance
California Hangars	Hangar leasing
Erect-A-Tube, Inc.	Hangar leasing
Hartmann Hangars	Hangar leasing
Helitender	Avionics
Keystone Aerial Surveys	Aerial surveys
M&D Aircraft Storage	Hangar leasing
Pacific West Aviation/Western Hangars	Hangar leasing
Rick Coulter	Hangar leasing
Schiff Aviation	Aircraft maintenance
Sierra Pacific Aviation, LLC	Hangar leasing
Specialty Aero Leasing	Hangar leasing
Summit Helicopter/Angel City Air, Inc.	Helicopter operations
Vista Air	Flight training
Vista Aviation	Aircraft maintenance
Welk Aviation	Helicopter operations
Civil Air Patrol Squadron 35	US Air Force civilian auxiliary
Civil Air Patrol Squadron 137	US Air Force civilian auxiliary
Experimental Aircraft Association Chapter 40	Non-profit aviation organization
Glendale Community College Aviation	Non-profit aviation organization
San Fernando Valley Ninety-Nines	Non-profit aviation organization
Whiteman Airport Association	Non-profit aviation organization



Airport Facts

◆ Operations

- 97,698 total (2020)
 - Each landing and take off is counted separately

◆ Based Aircraft

- Single Engine: 213
- Multi Engine: 12
- Helicopter 3
- Total: 228

◆ Airport Economics

- **\$39.4 million in direct economic effect**
 - For example: on-site aircraft maintenance company is paid by an aircraft owner to repair an engine
- **\$43.8 million of indirect/induced economic effect**
 - For example: on-site aircraft maintenance company purchase parts from supplier



What is the role of the FAA?

- **Airspace**
 - The FAA regulates the airspace around the Whiteman Airport and LA basin through the control tower and Los Angeles Center air traffic control.
- **Aircraft**
 - FAA issues and enforces regulations covering manufacturing, operating, and maintaining aircraft in addition to certifying pilots and airports for safety.
- **Roles**
 - National Transportation Safety Board (NTSB)
 - Investigates every civil aviation accident in the U.S., determines probable cause, and issues safety recommendations.
 - Federal Aviation Administration (FAA)
 - Issues and enforces regulations, operates air traffic control, builds or installs air navigation facilities.
 - Local first responders
 - LAFD and LAPD cooperate with the airport for emergency response and conduct training exercises.



Aircraft Accident On-Scene General Responsibilities & Protocol

◆ Notify

Report the accident – 911 (Police/Fire), FAA, NTSB, Public Works

◆ Protect People

Lifesaving operations take priority.

◆ Protect Property

Protect property from unnecessary additional damage.

◆ Preserve Evidence & Investigate

Treat the area as if it was a crime scene. Provide security, identify witnesses, and gather and record incident/accident details.

◆ Recovery Operations

Everything on the site may be under the control of the FAA and/or NTSB until released.

◆ Community Responsiveness Protocol

- Identify and engage persons impacted by the accident
- Coordinate mental health services if needed
- Aid with insurance claims/issues
- Coordinate municipal services – repairs, street cleaning
- Be available and responsive to related questions and concerns

Local Airport Funding

- ◆ An **enterprise fund** is a separate **account for specific services that are funded directly by fees and charges to users** of these services.
- ◆ The Los Angeles County Airport Enterprise Fund is used to account for the administration, maintenance, operation and improvement of the five County-owned airports. Revenues are derived primarily from airport charges, fuel sales, and hangar rentals.

